

**TELTEK DIGITAL SPEEDOMETER
INSTALLATIONS AND CALIBRATION INSTRUCTIONS
PART# 159A - 259A - 159AK - 259AK**

SPECIFICATIONS

- * **SPEED RANGE** - 0-150 MPH / 241 km/h
- * **EASY CALIBRATION** - NO CALCULATIONS TO DO AND NO SWITCHES TO SET
- * **INPUT VOLTAGE** 10-16 VDC @ 150 ma (.15amps) MAX -FULL BRIGHTNESS
- * **AUTOMATIC DISPLAY DIMMING** - ADJUST TO AMBIENT LIGHT IN THE CAB.

CALIBRATION

METHOD 1 GPS - IF YOUR GPS DISPLAYS MILES IN .1 EXAMPLE (1.2)

1. PRESS AND HOLD THE TRIP SWITCH - IN 12 SECONDS A NUMBER WILL APPEAR IN THE ODOMETER AREA - KEEP HOLDING THE SWITCH UNTIL CAL IS DISPLAYED IN THE CENTER DISPLAY. APPROXIMATELY 8 SECONDS - RELEASE THE TRIP SWITCH

2. DRIVE 1 MILE AND STOP. THE NUMBER IN THE ODOMETER AREA IS THE NUMBER OF PULSES PER MILE FROM THE TRANSMISSION SENSOR.

WRITE DOWN THE NUMBER _____ AFTER 1 MILE.

**3. PRESS AND HOLD THE TRIP SWITCH FOR 2 SECONDS AND RELEASE THE SWITCH
THE CALIBRATION IS COMPLETE**

METHOD 2 MILEPOST MARKER - STOP AT A MILEPOST MARKER

1. REPEAT STEPS 1 METHOD 1

2. DRIVE TO THE NEXT MILEPOST MARKER AND STOP.

**3. PRESS AND HOLD THE TRIP SWITCH FOR 2 SEC. AND RELEASE.
THE CALIBRATION IS COMPLETE.**

FOR KM/H CALIBRATION - DRIVE 1 KILOMETER

"NOTE"

Most milepost markers are accurate
If the Speed is off, you can make adjustments with the procedure below.

AFTER CALIBRATING THE SPEEDOMETER AND YOU FEEL THE SPEED IS OFF

**1. PRESS AND HOLD THE TRIP SWITCH UNTIL A 4 DIGIT # APPEARS IN ODOMETER AREA (10 SEC)
KEEP THE TRIP SWITCH PRESSED AND TAP THE MPH/KMH SWITCH ONCE. THEN RELEASE THE TRIP SWITCH.**

2. ADJ WILL BE DISPLAYED IN THE SPEED DISPLAY AREA

**IF THE SPEED IS SLOW BY 1 MPH , REDUCE THE 4 DIGIT# BY 25
BY PRESSING THE TRIP SWITCH**

**IF THE SPEED IS FAST BY 1 MPH, INCREASE THE 4 DIGIT# BY 25
BY PRESSING THE MPH SWITCH**

**AFTER THE NEW # HAS BEEN SET, WAIT UNTIL THE ADJ DISAPPEARS. (25 SEC)
THE SPEEDO ADJUST IS COMPLETE**

" NOTE "

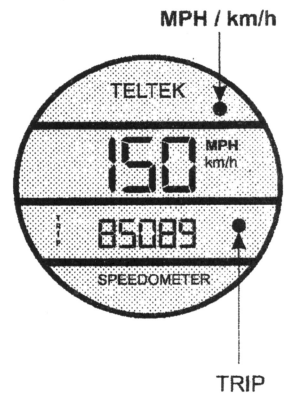
**ADD OR SUBTRACT 25 FOR EACH MPH IT IS OFF
EXAMPLE 1850 -25 WILL INCREASE THE SPEED BY 1 MPH
1850 +25 WILL DECREASE THE SPEED BY 1 MPH
IF OFF BY 2 MPH ADD OR SUBTRACT 50 FROM THE 4 DIGIT#**

RESET TRIP METER - PRESS AND HOLD TRIP SWITCH 5 SEC.

ODOMETER CAN READ OVER 3,000,000 MILES - THE DISPLAY CAN ONLY DISPLAY 5 DIGITS AT A TIME. WHEN 100,000 MILES DISPLAYED, THE DISPLAY WILL START FROM THE RIGHT SIDE AND SCROLL ACROSS TO THE LEFT AND THE #1 WILL DROP OFF THE LEFT SIDE. WHEN A MILLION MILES IS REACHED THE 10 WILL DROP OFF THE LEFT SIDE

1087372 = 1,087,372 MILES

**IF YOU HAVE ANY QUESTIONS or PROBLEMS - CALL US DIRECT
1-800-835-8367 M-F 8AM - 4PM PST**

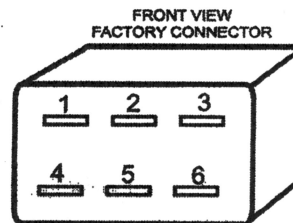


BACK VIEW FACTORY CONNECTOR

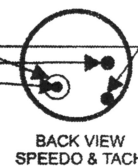
SPEEDO & TACH WIRING TO FACTORY HARNESS

IDENTIFY WHICH CONNECTOR
YOU HAVE TYPE 1-2 or 3
AND WIRE TO GAUGE PER DRAWING

TYPE 1

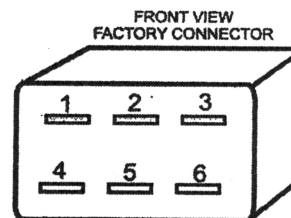


PIN# 1 = SENSOR
2 NOT USED ON TELTEK GAUGE
3 = GROUND
4 = +12V
5 = SENSOR
6 = NOT USED

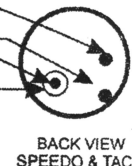


BACK VIEW FACTORY CONNECTOR

TYPE 2



PIN# 1 = +12VDC
2 = SENSOR
3 = GROUND
4 = NOT USED
5 = SENSOR
6 = NO FACTORY WIRE
BLANK

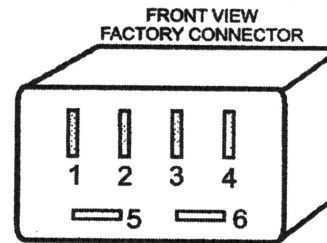


"NOTE"

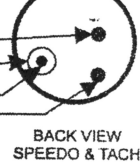
In most cases, the Speed / Tach
sensor wires are twisted together
before going into the back of factory connector

BACK VIEW FACTORY CONNECTOR

TYPE 3



PIN# 1 = +12V
2 = SENSOR WIRE
3 = SENSOR WIRE
4 = GROUND
5 & 6 NOT USED ON TELTEK GAUGE



CONNECTOR MAY
HAVE ROUND TERMINALS

IF YOU HAVE ANY QUESTIONS or PROBLEMS - CALL US DIRECT
1-800-835-8367 M-F 8AM - 4PM PST